

# User Manual

# plugiator asX

Authentic Sound Expansion

User Manual Version V1.0  
March 2008

use|audio

## License and Disclaimer

Installation and/or any use of the Product will constitute acceptance of all terms and conditions contained herein. The software, firmware, sound data and related documentation included with this Product is provided to you on a license basis. The Plug-in Manager software requires your separate acceptance of its respective software license, for which you will be prompted during installation of the software.

You are prohibited to modify, disassemble, reverse engineer or distribute any software, firmware or documentation provided with this Product. We must caution you that this documentation may include technical inaccuracies or typographical errors. We can not warrant that the supplied software will be compatible with any specific computer or configuration.

This Product requires the previous installation of Adobe Flash Version 9.0 or later.

The Product is provided for your reasonable enjoyment only and Use Audio Inc offers no warranty for any particular fitness of the Product. Use Audio Inc warrants that the Product performs in material conformance with published specifications in supported configurations. For hardware warranty terms, please refer to the last pages of this user manual.

In no event will Use Audio Inc be liable for any loss of data or for errors in data use or processing resulting from the use of this Product or the documentation. In particular, Use Audio Inc will not be responsible for any direct or indirect damages (including lost profits, lost savings, delays or interruptions in the flow of business activities, including but not limited to, special, incidental, consequential, or other similar damages) arising out of the use of or inability to use this Product or the associated documentation.

The use of registered names, trademarks, etc., in this publication does not imply, even in the absence of a specific statement, that such names are exempt from the relevant protective laws and regulations (patent laws, trademark laws etc.) and therefore free for general use. Permitted use of 3<sup>rd</sup> party trademarks does not mean that Use Audio Inc is affiliated with the respective trademark holder in any way. In no case does Use Audio Inc guarantee that the information given in this documentation is free of such third-party rights.



This Product is in compliance with applicable CE, FCC Part 15 Class B and RoHS requirements as of December 2007. Copyright © 2007-2008 Use Audio Inc. All rights reserved.

# Table of Contents

License and Disclaimer .....	2
Table of Contents .....	3
Introduction .....	5
What's in the Box .....	6
Important Safety Instructions .....	7
<b>Getting Started .....</b>	<b>9</b>
Installing the Plugiator ASX into your CME keyboard .....	9
Instructions for UF Series keyboards .....	10
Instructions for VX Series keyboards .....	12
Common connections for both UF and VX .....	13
External Connections .....	14
<b>Plug-Ins &amp; Presets .....</b>	<b>15</b>
Loading Plug-ins .....	16
Changing Presets .....	17
<b>USB Connections and Driver Installation .....</b>	<b>18</b>
Confirming that the Driver has been correctly installed .....	19
<b>Installing the Plug-in Manager Software .....</b>	<b>20</b>
<b>Using the Plug-in Manager Software .....</b>	<b>21</b>
General .....	21
Panel Layout .....	22
Software Menus .....	23
File Menu .....	23
View Menu .....	24
Options Menu .....	25
Making Firmware Updates .....	28
Online Menu .....	32
Help Menu .....	32

Using the Plugiator ASX .....	33
Slot Configuration .....	33
Local ON/OFF .....	34
Activity Monitor .....	35
Presets .....	36
Preset File - Context Menu .....	36
Bank - Context Menu .....	37
MIDI Keyboard .....	38
MIDI Monitor .....	39
Tabs .....	40
Preset Manager .....	40
Engaging Presets .....	41
Modifying Presets using the Plug-in Manager Software .....	42
Online Sounds .....	43
Keyboard Controller Assignments .....	44
Recording & MIDI .....	47
Simultaneously using the Plug-in Manager and a MIDI Sequencing Application for Recording and Playback .....	47
Specifications .....	51
Frequently Asked Questions (FAQ) .....	52
MIDI Implementation Tables .....	55
Hardware Warranty Regulations .....	59
EMI / EMC Compliance .....	60
Origin .....	60
Notes .....	61

# Introduction

Thank you for purchasing the Plugiator ASX - Authentic Sound Expansion for your CME keyboard. A lot of effort and passion went into this product, which we are sure you will appreciate – and we hope you will have as much fun with it as we have.

The Plugiator ASX - Authentic Sound Expansion can be used with either UF or VX series keyboards to convert your MIDI controller into a great sounding performance synthesizer. Why do we say performance synthesizer: the Plugiator ASX is not a multitimbral workstation, and it is not primarily targeted for production, but it is targeted towards the performing keyboard musician who seeks to play excellent classic and exciting new sounds – in a band, on stage, or just for himself.

The Plugiator ASX does not rely on playback of sampled sounds, but it emulates real synthesizers. It was designed to model their exact behaviour and deliver the same powerful sound as the originals. You will quickly notice the difference. The Plugiator ASX sounds like original, and not like a recording of it – maintaining all the depth, the dynamics and the liveliness of the sound. Also it lets you to tweak any parameter and easily allows you to design new sounds from ground up, if you like.

Several aspects of the Plugiator ASX are new and unique. Combining the compact size and „compact“ price point of sample-based sound modules with the latest in DSP technology, the Plugiator ASX provides innovation and flexibility previously only available in the software plug-in domain. Its open and modular architecture, combined with unique internet integration for quick browsing of online sounds, allows you to capture a whole world of sounds and take it anywhere you take your keyboard controller. Use your computer for managing your sounds – but when it is time to go out, perform and have fun, you can now leave your computer at home.

Great plug-in technology just became light-weight and portable!

# What's in the Box

Please check that your product packaging contains all the following items:

- This User Manual
- Plugiator ASX board
- Metal Face Plate for UF model (installed)
- Metal Face Plate for VF model (for optional use)
- USB Cable 1.8m
- Software Installation CD

In case your product has been damaged during transport or the content of the packaging is short of any of the items listed above, please report such issue to your dealer immediately. In case your dealer does not prove to be helpful, please contact Use Audio Inc. directly.

# Important Safety Instructions

**PLEASE CAREFULLY READ THE FOLLOWING:**

## **Electrical Safety**

- DO NOT USE THIS PRODUCT NEAR WATER.
- CLEAN ONLY WITH A DRY CLOTH.
- DO NOT INSTALL NEAR ANY HEAT SOURCES SUCH AS RADIATORS, HEAT REGISTERS, STOVES, OR OTHER APPARATUS (INCLUDING AMPLIFIERS) THAT PRODUCE HEAT.
- UNPLUG YOUR KEYBOARD DURING LIGHTNING STORMS OR WHEN UNUSED FOR LONG PERIODS OF TIME.
- **SERVICING:** Refer all servicing to qualified service personnel. Servicing is required when the product has been damaged in any way, such as liquid has been spilled or objects have fallen onto the product, the product has been exposed to rain or moisture, does not operate normally, or has been dropped.
- **DO NOT OPEN THE PRODUCT:** Unauthorized opening of the product will void the limited hardware warranty and exposes you to the risk of **ELECTRIC SHOCK**.

### **Protecting your Ears and Equipment**

**CAUTION:** This product is able to produce sound levels which may damage your ears and/or speakers connected. Please be very conservative on the volumes you are using and always keep your mixer and amplification levels in a range so that loud sounds or spikes produced by the product (intentionally or unintentionally) would not exceed safe levels for your equipment or your ears.

### **Disposal Notice**

Should this product become damaged beyond repair or should you wish to dispose the product, please observe all local, state and federal laws and regulations regarding the disposal of electronic equipment. If your dealer is unable to assist you, you can contact Use Audio Inc. directly and we shall assist you with an environmentally safe disposal.

# Getting Started

## Installing the Plugiator ASX into your CME keyboard.

The Plugiator ASX board has been designed to be used with either the CME UF or VX Series keyboards.

1. At the rear of your keyboard you will find an expansion slot that is used for expansion boards such as the Plugiator ASX.
2. If you have previously not used an expansion board in your keyboard this slot would be covered by a blank panel.
3. Remove the blank panel covering the expansion slot.
4. You will find attached to the blank panel, connectors for the ASX board.
5. The ASX board is supplied with a slot panel to fit the size of the expansion slot on the UF Series keyboards.

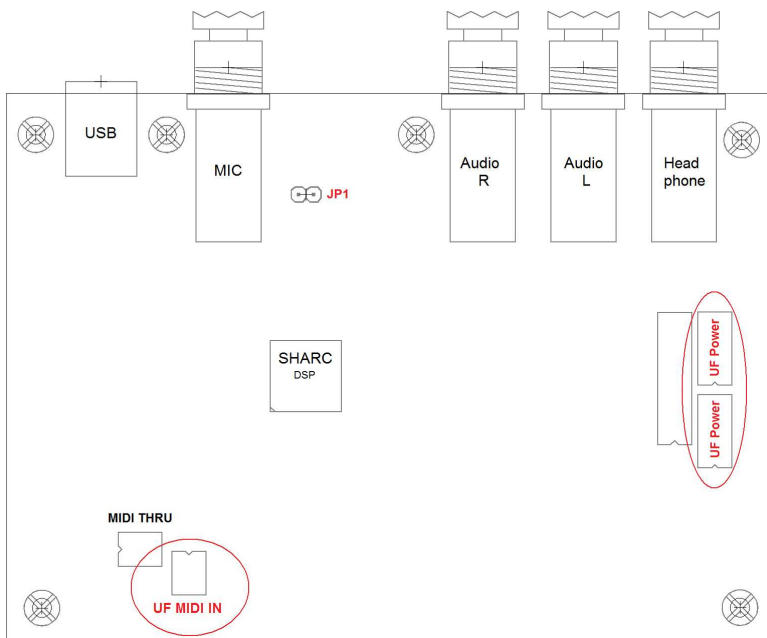
If you are using a VX Series keyboard, please unscrew the panel from the Plugiator ASX board and use the spare VX slot panel supplied along with your Plugiator ASX board.

- A. Instructions for CME UF Series keyboards.
- B. Instructions for CME VX Series keyboards.

## A. Instructions for UF Series keyboards

1. You will find two JST XH type connectors attached to the back panel on the expansion slot.
2. One connector is a 4 pin and the other is a 2 pin.
3. The 4 pin connector provides the power from the keyboard to your Plugiator ASX board.
4. The 2 pin connector provides MIDI signals from the keyboard to the Plugiator ASX board.

### Making connections for the UF Series keyboards:

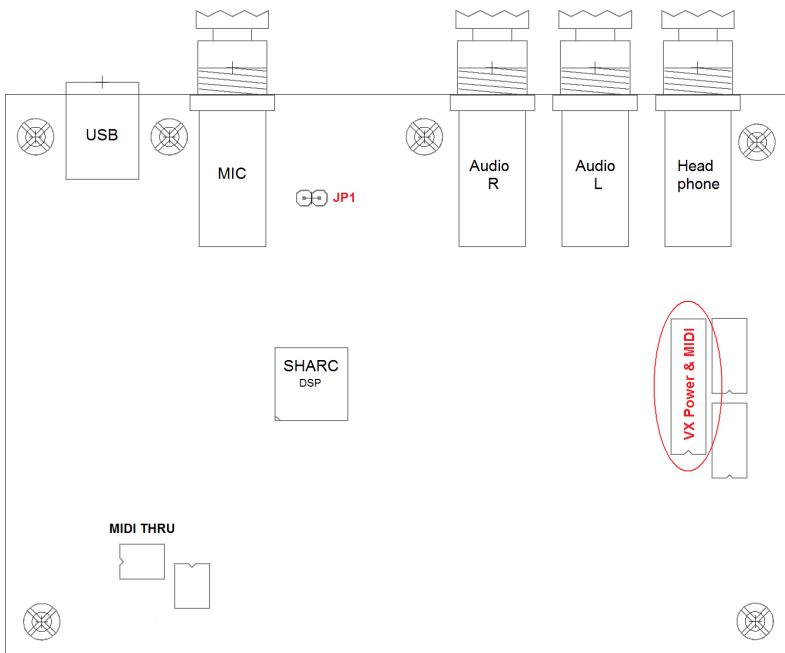


1. You will find a total of 5 JST XH connectors located on the expansion board.
2. Connect the 4 pin JST XH connector from the keyboard to either one of the 4 pin sockets located towards the right side of the board and showing in the diagram.
3. Connect the 2 pin JST connector from the keyboard to the 2 pin MIDI socket located on the lower left side of the board as shown in the diagram.

## B. Instructions for VX Series keyboards

1. You will find one JST type connector attached to the back panel of the expansion slot.
2. This is an 8 pin connector.
3. The 8 pin connector provides both power & MIDI from the keyboard to the Plugiator ASX board.

### Making connections for the VX Series keyboards:



1. You will find a total of 5 JST connectors. One of them is a 8 pin JST XH connector.
2. Connect the 8 pin JST XH connector from the keyboard to the 8 pin sockets located on the right side of the board as shown in the diagram.

## Common Connectors for both UF & VX

1. MIDI THRU – The MIDI THRU connector is used to send MIDI signals from one expansion board to another (if there is more than one board fitted in your keyboard)
2. JP1 – This jumper setting is used depending on the type of microphone you connect to the Plugiator ASX.

The Plugiator ASX board is designed to work with both professional balanced and unbalanced microphone inputs.

For balanced microphone connections use a standard 1/4th inch TRS connector.



For unbalanced microphone connections use a standard 1/4th inch TS connector.



For users who wish to connect a multimedia headset microphone (which commonly use 1/8" TRS connectors with Tip and Ring internally shorted) Jumper JP1 must be removed.

- ***By default the ASX board is fitted with the JP1 to work with professional microphones.***

## External Connections

After having installed the Plugiator ASX board into your keyboard you will have access to its physical connections on the rear of your keyboard.



### 1. USB

Connect your Plugiator ASX to your computer's USB port in order to use it with a MIDI sequencer or the Plug-in Manager software.

### 2. Mic

The expansion board allows you to connect a professional dynamic microphone to your keyboard over a 1/4" phono jack. Please note that some commercial headset microphones use TRS connectors with Tip and Ring internally shorted. Please refer to „Common Connectors for both UF & VX“ in this User Manual.

### 3. Audio Out

The Audio outputs of the Plugiator ASX are two high quality analog unbalanced line level outputs available on 1/4" phono jacks as left and right signals.

In order to hear audio from your expansion board, connect the Audio Out L & R to the Left / Right inputs of a mixing console, a pair of powered speakers, a computer sound card or a HiFi system.

### 4. Headphone

A headphone output is available on a 1/4" phono stereo jack for monitoring audio over a pair of stereo headphones.

# Plug-Ins & Presets

The Plugiator ASX can run one plug-in at a time and can store upto eight plug-ins (instruments) within its internal memory.

Along with your initial purchase of the product you have been supplied with three plug-ins; the Minimax, B4000 and the LightWave. Additionally, the Vocodizer can be downloaded for free after registering your hardware online at [www.use-audio.com/register](http://www.use-audio.com/register).

In addition to these four plug-ins, more plug-ins can be purchased & downloaded from [www.use-audio.com/options](http://www.use-audio.com/options).

## Loading Plug-ins

There are two ways of loading plug-ins within the Plugiator ASX.

1. Using the Plug-in Manager Software installed on a computer.
2. Loading a plug-in from your MIDI keyboard by sending a MIDI Program Change & playing a note to confirm this selection.

**Example:** By sending the MIDI Program change 101 and playing a note on your keyboard within a short duration you will load the first plug-in (MINIMAX).

Below is the list of plug-ins and Program Change numbers required to load plug-ins.

<b>Program Change</b>	<b>Note</b>	<b>Plug-in</b>
101	any	MINIMAX
102	any	Lightwave
103	any	B4000
104	any	Vocodizer

Additional plug-ins available via the Online Shop

<b>Program Change</b>	<b>Note</b>	<b>Plug-in</b>
105	any	Prodyssey
106	any	Pro-12
107	any	Fmagia
108	any	Drums'n'Bass

## Changing Presets

Each plug-in on the Plugiator ASX has 100 internal presets.

**Note:** *Creating, storing, modifying and managing preset files will be discussed later in this User Manual*

There are two ways of changing presets for the currently active plug-in on the Plugiator ASX.

1. Changing presets via the Plug-in Manager software installed on a PC. Note that in this case, a preset which is stored in the software will be recalled. These presets reside on your computer, and may not be related to presets stored in your Plugiator ASX board.
2. Changing presets from your MIDI keyboard by sending MIDI Program Change messages in the range of 1 to 100. This will call up the corresponding preset which is stored in the Plugiator ASX board.

**Note:** *Presets which are stored in the Plugiator board are not necessarily in sync with presets listed in the Plug-In Manager Software. Changes you make in the software will not be stored in the board unless you write the bank to the Plugiator hardware. Vice versa, changes you make to the presets stored in the Plugiator board will not be available in the software unless you read out a bank from the Plugiator board. That was done on purpose to allow management of multiple banks across multiple Plugiator boards.*

## MIDI Program Change List

MIDI Program change	1....100	Loading Presets.
MIDI Program change	101....108 + any Note	Loading Plug-ins.
MIDI Program change	109....127	Have no effect.

# USB Connections & Driver Installation

The USB interface on the Plugiator ASX is used for two applications:

1. To connect the Plugiator ASX to the Plug-in Manager software installed on your computer / laptop to manage presets and settings.
2. To record MIDI information from your Plugiator ASX directly into your favourite computer music sequencing application.

To install the Plugiator ASX Drivers and Plug-in Manager software on a PC you will require a Windows XP operating system with Service Pack 2 or Windows Vista. For support of the Mac OSX please refer to [www.use-audio.com](http://www.use-audio.com).

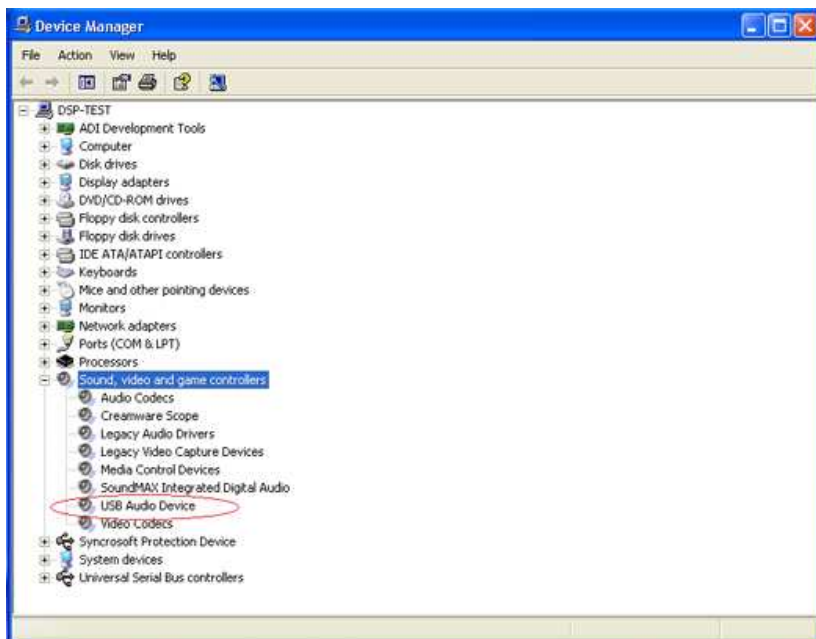
After connecting the Plugiator ASX board to your computer's USB port, Windows will automatically detect and install the "USB Audio Driver"

You will see a dialog box (figure shown below) displaying that a new USB device has been found and that Windows is installing drivers for this device automatically.



## Confirming that the Device has been found and the Drivers have been correctly installed:

1. Go to My Computer -> Device Manager.
2. Under your Machine Name -> Sound Video & Game controllers you will find an entry for your Plugiator ASX hardware called "USB Audio Device"



3. If you can see the entry for the `USB Audio Device' within Device Manager the driver installation is correct.

If this step was not successful, unplug the USB cable from the computer and try to use an alternative USB port available.

**Note:** It is recommended that you always use the same USB port to connect the Plugiator ASX to your Computer which you used while installing the drivers. Otherwise, in some computer configurations, your Plugiator ASX board may not be recognized.

# Installing the Plug-in Manager Software

To install the Plug-in Manager Software on your computer/laptop, please insert the supplied CD-ROM labeled 'Plug-In Manager Software' into the CD-ROM drive of your computer.



In case the installation does not start automatically, please manually run the setup file from the CD.

The installation software will greet you with information about which software you are about to install. On the following page you will find the license agreement. Please read it carefully and if you agree, select "I accept the license terms" then continue by pressing the 'Next' button.

You can now set the installation path within the 'Installation path' pull-down menu. If you don't set a dedicated path here, the Remote Software will be installed to "C:\Program Files\Use Audio\Plug-in Manager.

The installation requires approximately 11 MB of free hard disk space.

**Note:** The Plug-in Manager requires Adobe Flash Player V9 or higher installed on your computer. You will be prompted to download the latest version of Flash if the installer does not detect this during the installation process.

**Note:** If the Plug-In Manager Software is already installed on your computer, make sure to first uninstall the existing installation before you re-install the software. Find the uninstall option in the program folder of the Plug-In Manager software. If you changed the default presets banks and you want to keep your changes, make sure you save them to a different name and location before you run the uninstall function!

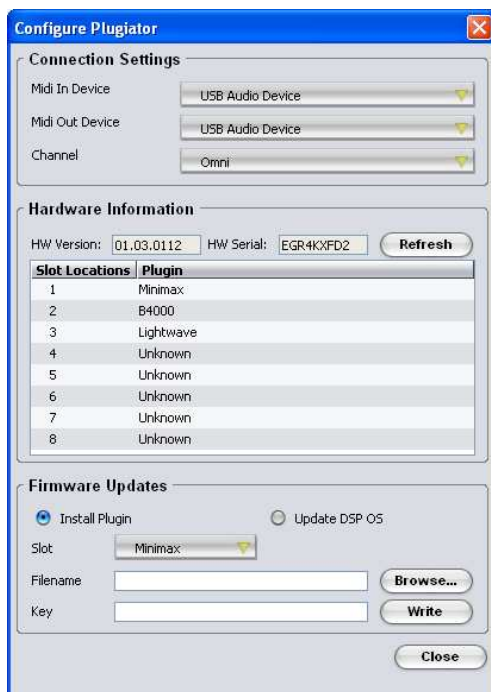
# Using the Plug-in Manager Software

## General

To control your Plugiator ASX with the Plug-in Manager software, you will need to connect the Plugiator ASX to a computer via USB or MIDI. (Please refer to the previous chapter "USB connections and Driver installation")

Double clicking on the shortcut called "Plug-in Manager" will load the application.

The software will prompt you to select the correct drivers to which the Plugiator ASX is connected. If you have connected over USB please select the USB Audio Device for the input and output (figure shown below)



## Panel Layout

On the **left section** of the editor software you will see four panels available.

- Slot Configuration Panel
- Presets Panel
- MIDI Keyboard
- MIDI Monitor

The **top right section** of the Plug-in Manager software displays the list of presets for a plug-in (this area could also display the online sounds if selected)

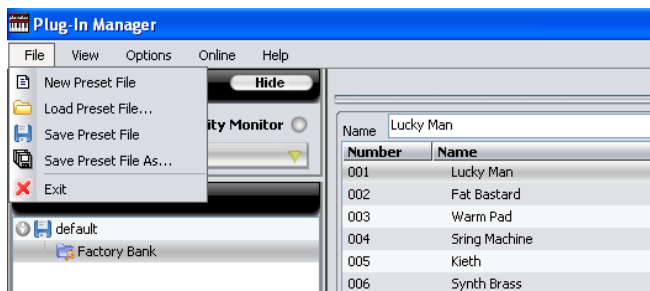
The **lower right section** of the Plug-in Manager displays the user interface of the currently loaded plug-in.



## Software Menus

The Menu Bar located on the top section of the screen allows access to the various Menus in the Plug-in Manager Software.

## File Menu



### New Preset File

Creates a new preset file for the currently active plug-in. Preset Files contain one or multiple Banks, which again contain up to 100 sounds each.

### Load Preset File

Loads a preset file previously stored on the hard drive.

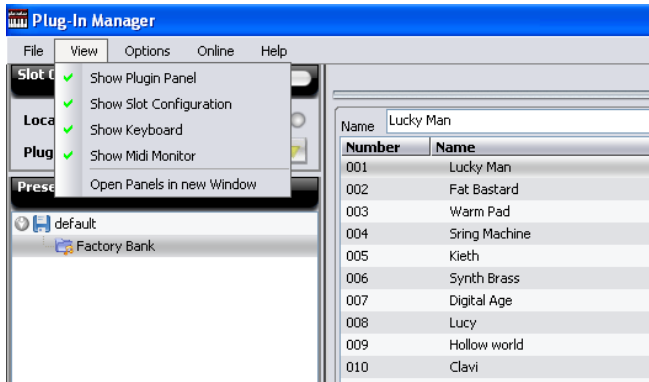
### Save Preset File

Saves a preset file onto the hard drive.

### Exit

Click to close the program. Make sure you have saved changes made in a preset list before exiting.

## View Menu



### Show Plug-in Panel

Shows/hides the panel of the loaded plug-in.

### Show Slot Configuration

Shows/hides the Slot Configuration window for selection of your active plug-in.

### Show MIDI Keyboard

Shows/hides the MIDI keyboard window on the left side.

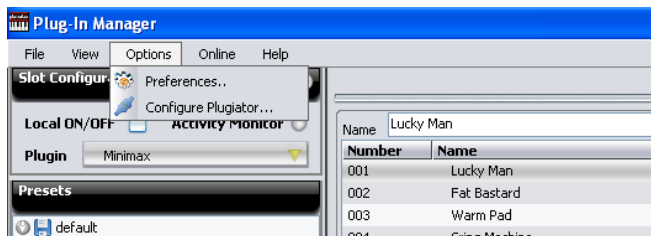
### Show MIDI Monitor

Shows/hides the MIDI monitor window on the left side.

### Open Panel in new Window

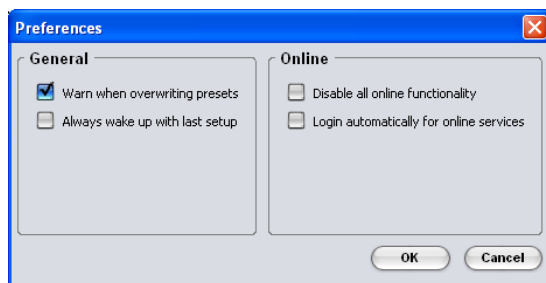
With this option checked it is possible to display the plug-in panel for the loaded device in a separate window from the editor window.

## Options Menu



### Preferences...

Click to open the program preferences dialog box.



**General:** Here you can turn on/off the warning, when overwriting presets and decide whether the Plug-in Manager should wake up with default window settings or with last setup.

**Online Settings:** Disable or enable all online functionality here or change your login name and settings.

## Configure Plugiator

This dialog box is used to configure the MIDI connection settings of the Plugiator ASX. Also, new plug-ins and DSP OS versions can be uploaded to your hardware via this dialog.



## Connection Settings

**MIDI Device (In / Out):** Use this window to select the MIDI Input and Output device (and port) used for connecting the computer / laptop to the keyboard.

**Channel:** By defining the channel you can change the MIDI channel of the selected MIDI input of the Plug-in Manager.

While using USB as the MIDI In/Out device, set Channel to receive in Omni mode.

## Hardware Information

In this section you will find details of your Plugiator ASX board, which you may need when downloading firmware updates.

**HW Version:** Shows the version number of your Plugiator ASX board.

**Serial Number:** Displays the serial number of your Plugiator ASX board.

This serial number is required while registering online to receive your free copy of the Vocodizer and to purchase additional plug-ins.

**Refresh:** Click on this button to update the information found on the unit, which is useful for checking the above MIDI device setting.

## Slot Locations/Plug-in

This table gives you an overview of which devices are currently installed in your Plugiator ASX board.

## Firmware Updates

**Browse:** Click on the 'Browse...' button to point the software to the plug-in file (with extension .pil) which you are about to install.

**Key:** Enter the activation key code for the plug-in here (for more details read the following section of this manual).

**Write:** Click on the 'Write' button to upload the plug-in to the Plugiator ASX board.

## Making Firmware Updates

Two kinds of updates are possible with the Plugiator ASX:

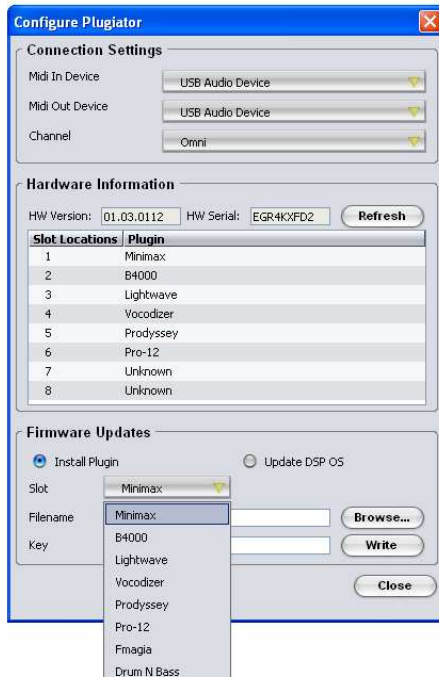
### 1. DSP - Operating System updates

You can download OS (Operating System) software updates for your Plugiator ASX when they become available.

To update the DSP OS:

1. Click & select "UPDATE DSP OS"
2. Browse for the OS file
3. Click on write (No key is required)

**Note:** You must restart your keyboard after the download process is complete.



## 2. Plug-in Update - Installing a new Plug-in

Installing a new or updated plug-in requires the key which was provided when purchasing the plug-in. To update a plug-in:

1. Click & select "Install Plugin"
2. Select the Slot into which you will install the plug-in. You can install a plug-in into any slot however we recommend you use the slot of the same name so that the plug-in slot will correspond to the labels on your Plugiator ASX.
3. Browse for the plug-in file which has the file extension **.pil** (which again stands for "Plug-In Loader")
4. Enter the Activation Key which you have received with your plugin.

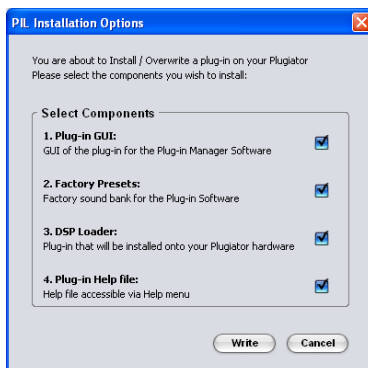


**Note:** If you wish to install an update for Minimax, LightWave or the B4000, the keys you have to enter at this point are as follows:

<b>Minimax</b>	<b>THHA8X2F6RF5</b>
<b>B4000</b>	<b>R5H25X7G8DC6</b>
<b>LightWave</b>	<b>T3XHHHFC92K</b>

5. Click on "Write".

Before the write process starts, a dialog box will prompt you to select the components you wish to install.



This dialog lets you decide which components of the plug-in you wish to install:

**When you install a plug-in for the first time**, make sure all four options are selected - otherwise the installation would not be complete and you will not be able to use the plug-in.


**When you install an updated version of a plug-in which is already installed on your machine, or you wish to install the same plug-in into another slot to gain space for 100 more presets on the Plugiator ASX board**, then you may want to disable one of the following items to keep (and not overwrite) previous versions:

**1. Plug-in GUI:**

Select this option to update/install The GUI for the Plug-in Manager of the plug-in you are about to update / install.


**2. Factory Presets:**

Includes the Preset File that contains the Factory Presets for the plug-in you are about to update / Install.

 **Note:** Deselect this option if you want to keep the default preset file of a previous installation. Note that with new versions of a plug-in, preset files may become incompatible and your previous preset file may not work perfectly well with your updated plugin firmware.

**3. DSP Loader:**

Contains the plug-in firmware and 100 presets that will be installed onto your Plugiator Hardware.

 **Note:** If you wish to install the Plug-In Manager on a second machine you may want to deselect this option in case you wish not to overwrite your existing sound bank and plug-in firmware on your Plugiator ASX board.

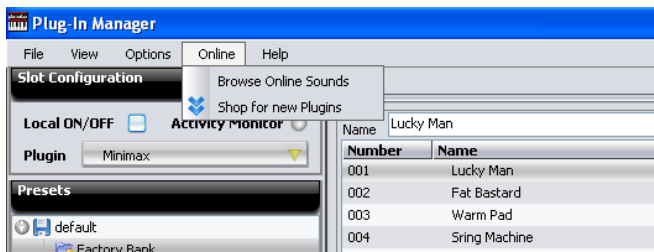
**4. Plug-in Help File:**

Includes the HTML help file found in the Help Menu.

**Note:** Please restart your Keyboard (power off, wait three seconds, then power on) after the download process is complete.

**Note:** In the rare event that the write process aborts with an error, you may try to repeat the process until the plug-in has been successfully written to the Plugiator ASX board. Such event indicates that there is a problem with a specific USB port or the chipset of your computer. In case writing does not succeed even after multiple attempts, please resort to writing the plug-in from another computer.

## Online Menu



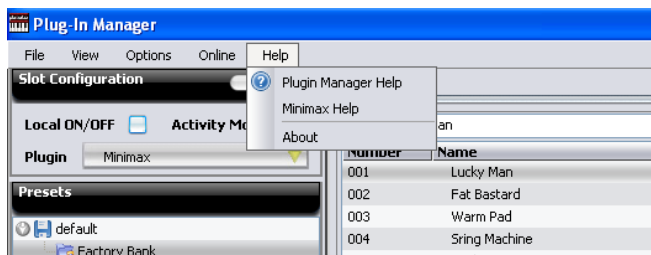
### Browse Online Sounds

Opens the Online Sound panel on the right side if activated in Online Settings.

### Shop for new Plug-ins

Opens the Online shop for the browsing the latest plug-ins and to register your product.

## Help Menu



### Plug-in Manager Help

Opens the Plug-in Manager HTML Help Page.

### <Synth Name> Help

Opens the HTML Help Page for the currently loaded Plug-in.

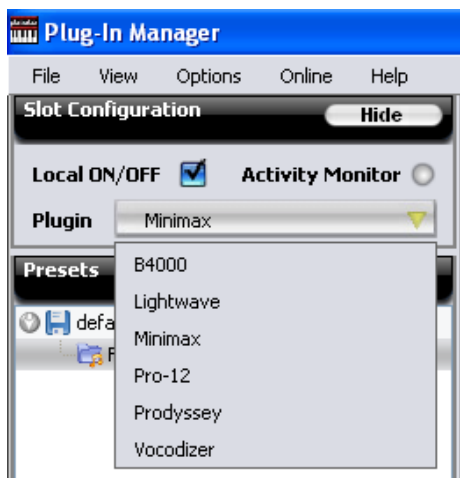
### About

About the Plug-in Manager version.

# Using the Plugiator ASX

## Slot Configuration

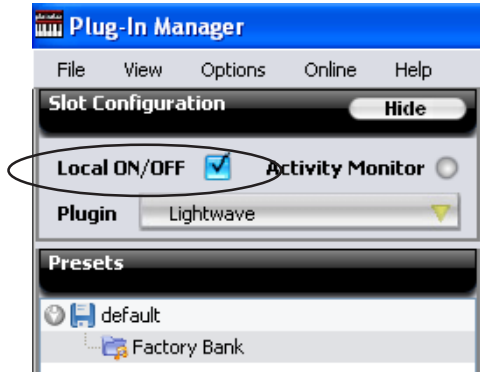
In this section you can see the currently loaded plug-in. To choose a different plug-in click on the arrow and select from the options available in the pull-down menu.



**Note:** The number of plug-ins being displayed in the pull-down menu is dependent on the number of plug-ins you have installed. Please visit [www.use-audio.com/options](http://www.use-audio.com/options) for more information about optional plug-ins available for your Plugiator ASX..

## Local ON/OFF

This option will switch Local ON or OFF.



### LOCAL ON:

When local is ON, MIDI messages from the keyboard will be sent to the expansion board's internal sound engine.

Use Local ON while using the Plugiator ASX in stand-alone mode.

### LOCAL OFF:

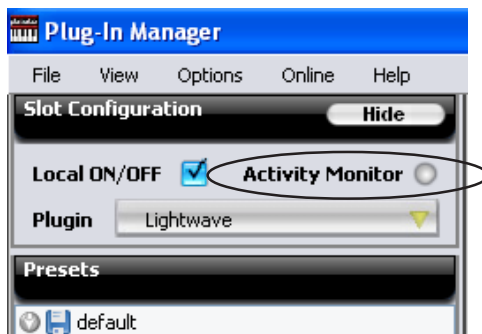
When local is OFF MIDI messages from the MIDI input will not be sent directly to the expansion board's internal engine, however will be forwarded to USB.

The Plugiator ASX will then be triggered only by external MIDI signals received over USB.

When using the Plug-in Manager along with a MIDI sequencing software use LOCAL OFF. Please refer to „Simultaneously using the Plug-in Manager & a MIDI Sequencing application for Recording and Playback“

## Activity Monitor

The Activity Monitor displays MIDI activity from both the software (Plug-in Manager) and your Plugiator ASX board.



When the Activity Monitor LED shows **Green** it is **sending** MIDI information from the Plug-in Manager software to the Output Driver (your Plugiator ASX board or sequencing application)

When the Activity Monitor LED shows **Red** it is **receiving** MIDI information from the MIDI input driver (your Plugiator ASX board or sequencing application)

## Presets

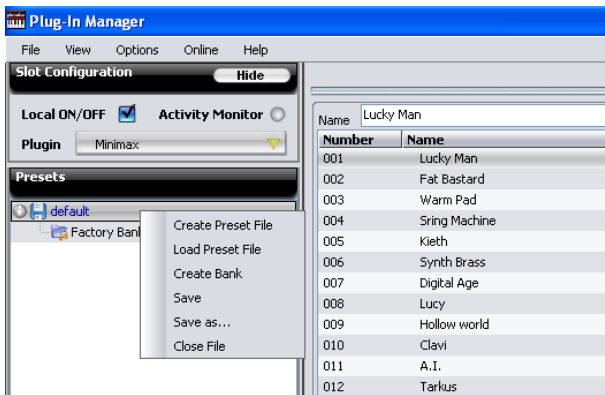
In this section you can see the loaded preset files and banks for the currently active plug-in.

The library has been structured in the following manner:

- Plug-in (one of the 8 plug-ins available on the Plugiator ASX board)
  - Preset File (contains one or more Banks)
  - Bank (contains Presets 1 till 100)
  - Preset (contains settings for the Preset)

## Preset File - Context Menu

Right-click on the Preset File icon to open the context menu:



### Create Preset File

Creates a new empty preset file with an empty default Bank.

### Load Preset File

Opens the file dialog for browsing a preset file on your hard disk.

### Create Bank

Creates a new preset Bank in the selected preset file.

## Save

For saving the preset file.

## Save as ...

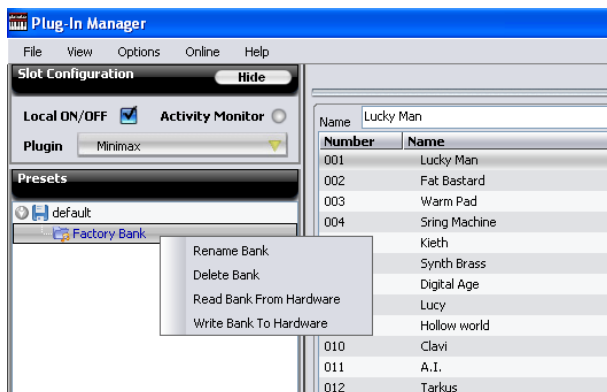
For saving a copy of the preset file with new name.

## Close File

For closing the selected preset file.

## Bank - Context Menu

Right-click on the Bank icon to open the context menu:



## Rename Bank

Opens a dialogue in which you can rename the selected Bank.

## Delete Bank

Deletes the selected Bank directly.

## Read Bank from Hardware

Reads the Bank, that is saved on your expansion board's internal memory.

## Write Bank to Hardware

Writes the selected Bank to your expansion board's internal memory.

## MIDI Keyboard

The Plug-In Manager Software's built-in MIDI keyboard enables you to quickly check sounds without using an external keyboard or sequencer software - you can play notes with the computer's mouse or your computer's alphabetical keyboard.

### Octave

Sets the range of the MIDI keyboard in octave steps.

### All Notes Off

Sends an "all notes off" MIDI message to the Plugiator ASX board in order to stop all current note activities / sound. Stuck notes can easily occur when using the on-screen MIDI keyboard with your computer's alphabetical keyboard while using the mouse to operate the software. We purposely let you create such stuck notes as they may be useful when using the UI to change parameters of a sound.

### Hide/Show

You can hide or show this dialog by clicking this button.



## MIDI Monitor

The 'MIDI Monitor' button is located on the lower left of the editor software's display. Click on it to view a list of incoming and outgoing MIDI messages.

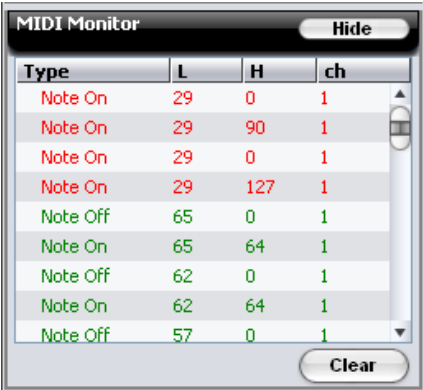
**Incoming** messages will be displayed in **RED** and **outgoing** messages in **GREEN**.

### Clear

Removes all entries from the MIDI monitor's display list.

### Hide/Show

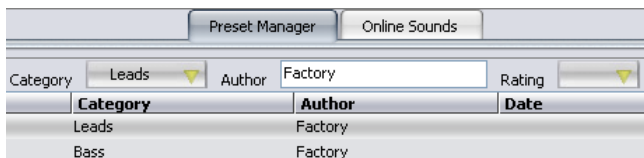
You can hide or show this dialog by clicking this button.



Type	L	H	ch
Note On	29	0	1
Note On	29	90	1
Note On	29	0	1
Note On	29	127	1
Note Off	65	0	1
Note On	65	64	1
Note Off	62	0	1
Note On	62	64	1
Note Off	57	0	1

## Tabs

These tabs allow the user to switch between Presets stored locally and Presets stored on the Online Sound Server.



**Note:** In order to see and access sounds on the Online Sound Server, your computer must be online with the internet. You are also required to register with the server to obtain access.

## Preset Manager

This tab contains the preset list of the loaded plug-in. On top of the list you find the details of the selected preset. Here you can change the preset name and other information for this preset like Category, Author, Rating and Comment.

Below you can see the listed presets from 1... 100. Each Bank has 100 presets. On the right of the list you find a scroll bar for scrolling to all presets of the selected Bank.

Presets are created via a context menu. Right-click on any preset and you will have four options:



**Restore**

Restores the settings that belong to the selected preset. A doubleclick on a preset will do the same.

**Overwrite**

Click or press „Ins" key to overwrite the selected preset with the current settings.

**Delete**

Click or press the „Del" key to delete the selected preset. The preset settings will be erased and the selected preset will be blank.

**Upload**

Uploads the selected preset to Online Sound server. (please refer to "Online Sounds")

**Engaging Presets**

When engaging a preset in the Plug-in Manager, the controller values for that preset are sent to the Plugiator ASX board - however, the preset number on the Plugiator ASX does not change.

Similarly when engaging a preset on the Plugiator ASX board via your keyboard, the controller values are updated in the Plug-in manager GUI but the preset number does not change. The reason for this is that the Plug-in Manager can work concurrently with multiple Preset Banks and any preset from any bank can be engaged onto the Plugiator ASX board. Meanwhile the Plugiator ASX can have just one active Bank (100 Presets).

The currently active Bank on the Plug-in Manager and the Plugiator ASX can only be synchronized by using the "Read Bank from Hardware" and "Write bank to Hardware" functions.

## Modifying Presets using the Plug-In Manager Software

Engage a preset via the Plug-in Manager.

Make your parameter modifications (via your Keyboard Controller or the synth GUI in the Plug-in Manager software)

After making your changes right click on the preset and click on Overwrite.

To save the modified preset with a different name right click on an empty preset and click on Overwrite.

To update changes made via the Plug-In Manager to the Plugiator ASX, right click on the Bank you wish to update and click on „Write Bank to hardware“.



**Note:** Please be aware that the „Write Bank to hardware“ function will overwrite any presets previously stored for the respective plug-in on the Plugiator ASX board.

## Online Sounds

Clicking on the Online Sounds tab will display the login page of the online sound server. If you are a new user, you will have to fill the User registration form. Next use your login name and password to access the sound server.

You will see a list of presets for the corresponding plug-in selected from the Slot configuration drop down.

1. Click on a preset to engage and hear it.
2. Click and drag a preset to a folder in your Presets panel in order to save it onto your computer.
3. To upload a preset onto the server, click on "Upload" after right clicking on a preset in the preset window view.

The screenshot shows a web browser window with the 'Online Sounds' tab active. The page title is 'LIGHTWAVE' and it indicates the user is logged in as 'Don Max'. Below the header is a table of presets. The table has columns for 'NAME', 'CATEGORY', 'AUTHOR', 'UPLOADED DATE', 'COMMENT', and 'POPULARITY'. The 'POPULARITY' column contains star ratings. A 'CATEGORY FILTER' sidebar is visible on the left, listing various instrument categories like Leads, Pads, Bells, Drums, etc.

CATEGORY FILTER	NAME	CATEGORY	AUTHOR	UPLOADED DATE	COMMENT	POPULARITY
Leads	Chase Piano	Piano	don	28-12-2007	No Comment	☆☆☆☆
Pads	Little Drops of Heaven	Bells	don	28-12-2007	No Comment	☆☆☆☆
Bells	Outard Memories	Pads	don	28-12-2007	No Comment	☆☆☆☆
Drums	Fender / Fartica	Piano	don	28-12-2007	No Comment	☆☆☆☆
Effects	Evolution	Sequence	don	28-12-2007	No Comment	☆☆☆☆
Sequence	Rocking	Piano	don	28-12-2007	No Comment	☆☆☆☆
Piano	Sequense	Leads	don	28-12-2007	No Comment	☆☆☆☆
Organ	Shower title	Pads	don	28-12-2007	No Comment	☆☆☆☆
Bass	Good lady	Pads	don	28-12-2007	No Comment	☆☆☆☆
Strings	Jazz Guitar	Pads	don	28-12-2007	No Comment	☆☆☆☆
Pluck	Filina Blocks	Sequence	don	28-12-2007	No Comment	☆☆☆☆
Soul	Inner Organ	Organ	don	28-12-2007	No Comment	☆☆☆☆
Rock	Dirty Mouth	Pads	don	28-11-2007	No Comment	☆☆☆☆
Reggae						

Presets are rated with stars in the "Popularity" field based on the total number of downloads made by Plugiator users within a certain recent period.

**Note:** By uploading your sound to the Online Sound Server, you make your sound available to the public and you grant other users as well as Use Audio Inc. the right to use, copy and distribute your sound without limitations.

# Keyboard Controller Assignments

You can control a number of parameters for each Plugiator ASX plug-in from your UF or VX keyboard.

For your convenience eight rotary knobs and eight faders have been mapped to each plug-in for optimal use. You can make use of these assignments by changing the Control Change values on your UF or VX keyboard controller.

## Procedure for CME UF Series keyboards.

1. Reset your CME Keyboard to load default controller values for all faders and knobs as found in your Keyboard Manual (Section 2.3 Page 9)
2. By default your keyboard controllers will be assigned with the following control numbers.

<b>Knobs</b>	<b>CC#</b>	<b>Faders</b>	<b>CC#</b>
KN1	CC74	CS0	CC11
KN2	CC71	CS1	CC11
KN3	CC73	CS2	CC11
KN4	CC72	CS3	CC11
KN5	CC10	CS4	CC11
KN6	CC91	CS5	CC11
KN7	CC93	CS6	CC11
KN8	NA	CS7	CC11
		CS8	CC21

3. To be able to use the factory default assignments for the Plugiator ASX you are required to configure the eight faders and knobs as per the values listed below.


<b>Knobs</b>	<b>CC#</b>	<b>Faders</b>	<b>CC#</b>
KN1	CC74	CS0	CC7
KN2	CC71	CS1	CC13
KN3	CC73	CS2	CC14
KN4	CC72	CS3	CC15
KN5	CC10	CS4	CC16
KN6	CC91	CS5	CC17
KN7	CC93	CS6	CC18
KN8	NA	CS7	CC19
		CS8	CC20

**Procedure for CME VX Series keyboards.**

1. Reset your CME Keyboard to load default controller values for all faders and knobs
2. You can control a number of selected parameters for each Plugiator ASX plug-in directly from your CME keyboard.

We recommend that you re-assign these controllers with the following Control Change assignments.

<b>Knobs</b>	<b>CC#</b>	<b>Sliders</b>	<b>CC#</b>
Knob1	CC74	Slider1	CC13
Knob2	CC71	Slider2	CC14
Knob3	CC73	Slider3	CC15
Knob4	CC72	Slider4	CC16
Knob5	CC10	Slider5	CC17
Knob6	CC91	Slider6	CC18
Knob7	CC93	Slider7	CC19
Knob8	NA	Slider8	CC20
		Slider9	CC7

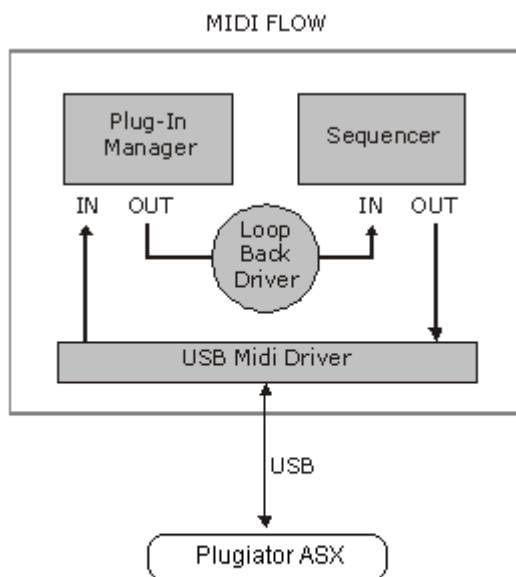
 **Note:** Please feel free to make your own assignments using the “MIDI Implementation Chart” attached at the end of this User Manual.

# Recording & MIDI

## Simultaneously using the Plug-in Manager and a MIDI Sequencing Application for Recording and Playback

For users who wish to use the Plugiator ASX along with the Plug-in Manager and a Sequencing application its important to read through this chapter.

Since both the Plug-in Manager and the MIDI Sequencing application (eg: Cubase) can not use the same driver (USB MIDI) to communicate with the Plugiator ASX, a so called „Loop Back Driver“ must be used in order to use the Plugiator ASX with both applications at the same time.



Several third party virtual „MIDI Loop Back“ drivers are available as freeware on the internet. One such application is LoopBe1™ available for download on [www.nerds.de/en/loopbe1.html](http://www.nerds.de/en/loopbe1.html)

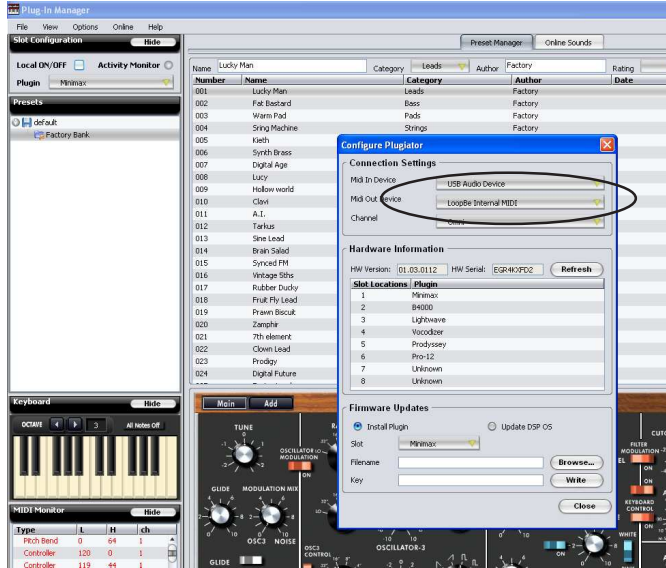
After installing your internal MIDI Looping software make sure that it is loaded. In the case of LoopBe1 you would see the icon in the status bar.



Now use the following setup:

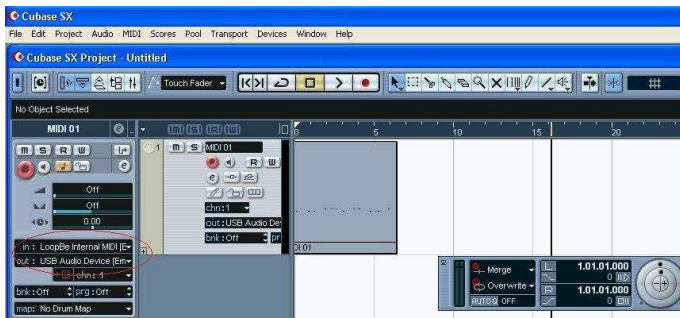
1. Launch the Plug-in Manager.
2. Click on LOCAL OFF in order to allow the Plugiator ASX sounds to be triggered only via USB.
3. Go to Plugiator ASX Configuration and select MIDI IN as USB Audio Device & MIDI OUT as LoopBe1 (refer to the image on the following page)
4. Open your sequencing application (e.g. Cubase) and create a MIDI track.
5. For MIDI IN use LoopBe1 & for MIDI OUT use USB Audio Device.

This enables MIDI signals received via USB from the Plugiator ASX to be routed to the Plug-in Manager and then to the sequencing application.



The Plug-in Manager will now use the LoopBe1 driver to send MIDI information to the Sequencing application (Cubase).

Your Sequencing application will be connected to the Plugiator ASX board via the USB Audio driver. (refer to the image below)

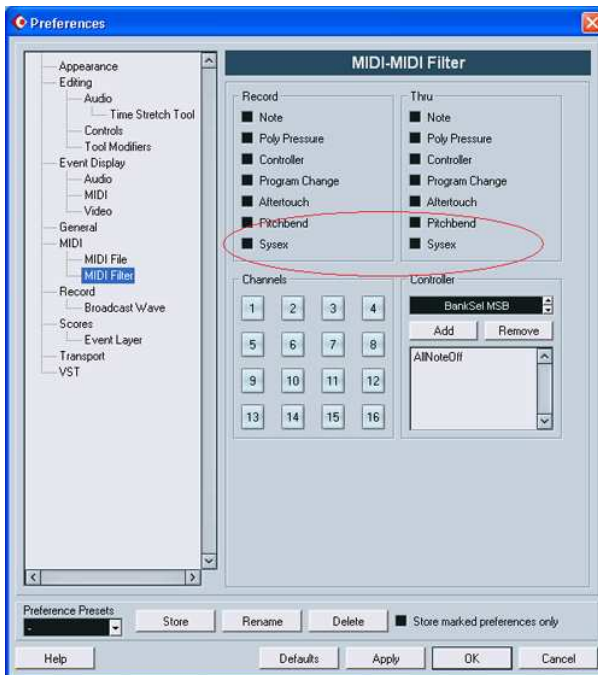


**Note:** Be sure that you have loaded the Plug-in Manager before starting your sequencing application. If you have more than one USB Audio Device connected to your system, you will have to make the correct selection from the pull-down menu for the Plugiator ASX within your sequencing application.

### ATTENTION!

Some MIDI sequencing applications have System Exclusive messages filtered by default. You will require to unselect System Exclusive messages from the filter so that MIDI messages can pass via Cubase towards the Plugiator ASX hardware.

For example within Cubase, go to File -> Preferences and click on MIDI Filter. Make sure that Sysex is not ticked.



# Specifications

## Synthesis Technology

Virtual Circuit Modelling, Physical Modelling

## Sampling Rate and Bit Resolution

44.1 kHz (internal over-sampling of upto 176kHz)  
 internal digital audio path 32 bit

## Polyphony

Minimax	10 voices
B4000	91 voices (full)
Lightwave	12 voices
Vocodizer	6 voices
Prodsysey	10 voices
Pro-12	12 voices
others	to be announced

## Control Connections

USB Full Speed USB rev 1.1

## Input

Mic Input 1 x 1/4 inch (6,3mm) mono TRS connector

## Outputs

Analog Line Output 2 x 1/4 inch (6,3mm) mono TS connectors

Headphone Output 1 x 1/4 inch (6,3mm) stereo TRS connector

# Frequently Asked Questions (FAQ)

## 1. How do I install more plug-ins?

After purchasing an additional plug-in for your Plugiator ASX you will download a \*.PIL file which you install using the Plug-in Manager Software via the „Options/Configure Plugiator“ dialog. To allow installation, you will be supplied with an Activation Key which is specific to your personal Plugiator ASX hardware.

**Attention!** While installing the \*.PIL file on additional computers please ensure that you deselect „DSP Loader“ in the „Plug-in Installation Options“ to avoid overwriting presets already stored on your Plugiator ASX hardware.

## 2. What's included in that Plug-in Loader (\*.PIL file) I have downloaded?

The .PIL file contains the GUI, the factory presets, the online help files and the actual DSP Loader. When installing a PIL file, you will be prompted by the Plug-in Manager Software to confirm the components you would like to install.

## 3. The Activation Key does not work?

Each purchased plug-in is usable on a single Plugiator board. The Key you have received for your newly purchased Plug-in is hardware specific. Make sure that you are using the activation key that was specifically provided for your Plugiator ASX hardware.

## 4. Which Key should I enter for updating my Minimax/B4000/LightWave plugin?

The Key you have to enter is as follows: Minimax: THHA8X2F6RF5, B4000: R5H25X7G8DC6, LightWave: T3XHHHFCD92K

## 5. Why does my Plugiator ASX take a few seconds to load a new plug-in?

While some sample based keyboards just need to set another pointer to switch a sound (and thereby switch sounds within a split second), your expansion board has to load a new software program onto the DSP. It therefore may take 1-3 seconds to engage a new plug-in on your hardware. Keep in mind that the Plugiator ASX does not rely on playback of sampled sounds but emulates real synthesizers via software technology.

## 6. How do I backup or use my Preset Files on multiple computers?

By default, new Preset files are stored in the [Local Drive]\Program Files\Plug-in Manager\chrome\devices\[plug-in name]\presets. Please ensure that you have backed up this directory before un-installing or deleting your Plug-in Manager Software installation.

## 7. I hear no sound...

1. Please ensure that the Master device volume of the Plugiator ASX is turned up.
2. In the Plug-in Manager software, please ensure that Local has been set to ON. Whenever the Plugiator ASX board is powered up, it operates in Local ON mode by default.
3. Check that the MIDI Monitor in the Plug-In Manager Software is showing incoming MIDI and that the Plugiator ASX is set to the correct MIDI channel you are using (or OMNI). If not, please check your MIDI keyboard with other MIDI equipment.
4. If you have just finished updating the DSP OS of your Plugiator expansion board, please ensure that you have re-started your keyboard.
5. Please check the multi-pin connection between your CME keyboard and the Plugiator ASX expansion board.

## 8. What are Preset Files, Preset banks & Presets?

For the convenience of file sharing of presets for the Plugiator ASX, we have implemented a structure for preset saving which is as follows:

- Plug-in (one of the 8 plug-ins available on the Plugiator ASX hardware)
  - Preset File (contains one or more Bank files)
    - Bank file (contains one or more Plug-in Presets)
      - Preset (contains settings for the Preset)

## 9. Can I change Plug-ins and Presets from within my MIDI Sequencer?

The Plugiator ASX uses a Program Change message to load a certain synth or a certain preset. Therefore you can easily „record“ and „play back“ the commands to switch sounds of the Plugiator ASX hardware. Use Program Change numbers 101-108 to load synths and Program Changes from 1-100 to change presets of the selected plug-in.

## 10. Why can't I use the „XYZ“ VST Plug-In with my Plugiator ASX board?

VST Plug-Ins utilize your computer's main processor to generate their sounds, and they rely on a very specific software environment under Microsoft Windows. It would be very expensive to put such an environment into a hardware synth expansion. In contrast, Plugiator ASX utilizes a special DSP processor which was designed for audio processing. Such DSPs are very powerful and affordable, but they have a different command set than your Intel/AMD computer so that VST code will not run on DSPs and vice versa. However, today's floating point DSPs have significant advantages over host processors - they provide facilities which help maintaining a fantastic sound quality.

**11. I have connected my UF/VF series keyboard to my PC over USB and don't hear any Sound on the outputs of my expansion?**

The Plugiator ASX board derives its power supply from your CME keyboard. CME keyboard controllers can be powered via USB or a power adapter supplied with your CME keyboard. The ASX board will not receive power if you are using the USB interface to provide power to your keyboard controller. Please ensure that you use the power adapter of your Keyboard controller to power the ASX.

**12. Can I connect my Plugiator ASX board to a different CME UF/VX Series keyboard?**

Yes, you can connect you Plugiator ASX to a different CME UF or VX Series keyboard while maintaining your current presets and Plug-ins.

# Minimax MIDI Implementation Table

## MIDI Controller Changes / Polyphonic Aftertouch Messages

CC	Parameter	CC	Parameter	pAT	Parameter	pAT	Parameter
1	Modulation	65	Glide Switch	1		65	
2		66	Sostenuto	2		66	
3		67	Soft Pedal	3		67	
4		68	Single Mode	4		68	
5	Glide Time	69		5		69	
6		70		6		70	
7	Plugiator Device Volume	71	Emphasis	7		71	Chorus Rate
8		72	Osc2 Frequency	8		72	Chorus Phase
9		73	Amount of Contour	9		73	Chorus Depth
10	Delay Dry/Wet	74	Cutoff	10		74	Chorus Feedback
11	Preset Volume	75		11		75	Chorus/Flanger
12		76		12		76	
13	Amp Env Attack	77		13		77	
14	Amp Env Decay	78		14		78	
15	Amp Env Sustain	79	Osc1 Range	15		79	
16	Osc2 Range	80	Osc1 Waveform	16		80	
17	Vcf Env Attack	81	Amp Env Velocity	17		81	Delay Time Left
18	Vcf Env Decay	82		18		82	Delay Note Left
19	Vcf Env Sustain	83	Osc2 Waveform	19		83	
20	Osc3 Range	84	Vcf Env Velocity	20		84	Delay Damp Left
21	Tune	85	Osc3 Frequency	21		85	Delay Level Left
22	Osc Modulation	86	Osc3 Waveform	22		86	Delay BPM Left
23	Pitch AT	87	Osc3 Control	23		87	
24	Band Range	88		24		88	
25	Osc1 Volume	89		25		89	
26	Osc2 Volume	90		26		90	Delay Cross
27	Osc3 Volume	91	Ch. Dry/Wet	27		91	Delay Time Right
28	Osc1 Switch	92		28		92	Delay Note Right
29	Osc2 Switch	93	Synth / Mic Volume	29		93	
30	Osc3 Switch	94		30		94	Delay Damp Right
31		95		31		95	Delay Level Right
32		96		32		96	Delay BPM Right
33	Noise Volume	97		33		97	Delay BPM
34	Noise Switch	98		34		98	Effects Bypass
35	Noise Type	99		35		99	
36	External Volume	100		36		100	
37	External Switch	101		37		101	
38	Synth Feedback	102		38		102	
39		103		39		103	
40		104		40		104	
41		105		41		105	
42		106		42		106	
43		107		43		107	
44		108		44		108	
45		109		45		109	
46		110		46		110	
47	Vcf Modulation	111		47		111	
48	Vcf Kkbd Ctrl1	112		48		112	
49	Vcf Kkbd Ctrl2	113		49		113	
50	Vcf AT	114		50		114	
51	Amp AT	115		51		115	
52		116		52		116	
53		117		53		117	
54		118		54		118	
55		119	Delay Feedback	55		119	
56	MW Intensity	120	All Sounds Off	56		120	
57	MW Offset	121		57		121	
58	Modulation Mix	122		58		122	
59	Env Decay	123		59		123	
60	Env Retrig	124		60		124	
61	Low Note Priority	125		61		125	
62		126		62		126	
63		127		63		127	
64	Sustain Pedal			64			

## B4000 MIDI Implementation Table

### MIDI Controller Changes / Polyphonic Aftertouch Messages

CC	Parameter	CC	Parameter	pAT	Parameter	pAT	Parameter
1	Modulation	65		1		65	
2	Horn Slow Speed	66	Sostenuto	2		66	
3	Horn Fast Speed	67	Soft Pedal	3		67	
4	Horn Acceleration	68	Rotor On/Off	4		68	
5	Horn Brake	69	MW/AT Select	5		69	
6	Horn Tone	70		6		70	
7	Plugiator Device Volume	71	Vibrato Upper On/Off	7		71	Chorus Rate
8	Bass Slow Speed	72	Rotor Speed	8		72	Chorus Phase
9	Bass Fast Speed	73	Vibrato Type	9		73	Chorus Depth
10	Delay Dry/Wet	74	Vibrato Lower On/Off	10		74	Chorus Feedback
11	Swell	75	Bass Brake	11		75	Chorus/Flanger
12	Upper 16'	76	Bass Tone	12		76	
13	Upper 5 1/3'	77	Mic Spread	13		77	
14	Upper 8'	78	Mic Balance	14		78	
15	Upper 4'	79		15		79	
16	Upper 2 2/3'	80		16		80	
17	Upper 2'	81		17		81	Delay Time Left
18	Upper 1 3/5'	82	Pedal 16'	18		82	Delay Note Left
19	Upper 1 1/3'	83	Pedal 5 1/3'	19		83	
20	Upper 1'	84	Pedal 8'	20		84	Delay Damp Left
21	Lower 4'	85	Pedal 4'	21		85	Delay Level Left
22	Lower 2 2/3'	86	Pedal 2 2/3'	22		86	Delay BPM Left
23	Lower 2'	87	Pedal 2'	23		87	
24	Lower 1 3/5'	88	Lower 16'	24		88	
25	Lower 1 1/3'	89	Lower 5 1/3'	25		89	
26	Lower 1'	90	Lower 8'	26		90	Delay Cross
27		91	Chorus Dry/Wet	27		91	Delay Time Right
28		92		28		92	Delay Note Right
29		93	Synth / Mic Volume	29		93	
30	Output Volume	94		30		94	Delay Damp Right
31		95		31		95	Delay Level Right
32		96		32		96	Delay BPM Right
33		97		33		97	BPM
34		98		34		98	Effects Bypass
35		99		35		99	
36		100		36		100	
37	Perc Harmonic	101		37		101	
38	Perc Level	102		38		102	
39	Perc Decay	103		39		103	
40	Perc On/Off	104		40		104	
41	Key Click	105	Lower Split Key	41		105	Boost
42	Condition	106	Upper Split Key	42		106	
43	Tuning	107		43		107	
44	Leakage	108	Pedal Octave	44		108	
45	Distortion	109	Lower Octave	45		109	
46	Attack	110	Upper Octave	46		110	
47	Release	111		47		111	
48	Velocity On/Off	112		48		112	
49		113		49		113	
50		114		50		114	
51		115		51		115	
52	Drive	116		52		116	
53	Drive On/Off	117		53		117	
54	Tone Treble	118		54		118	
55	Tone Bass	119	Delay Feedback	55		119	
56	Mixer UPPER	120	All Notes Off	56		120	
57	Mixer LOWER	121		57		121	
58	Mixer PEDAL	122		58		122	
59	MIDI Channel Upper	123		59		123	
60	MIDI Channel Lower	124		60		124	
61	MIDI Channel Pedal	125		61		125	
62	Mic Distance	126		62		126	
63	Bass Acceleration	127		63		127	
64	Sustain Pedal			64			

# LightWave MIDI Implementation Table

## MIDI Controller Changes / Polyphonic Aftertouch Messages

CC	Parameter	CC	Parameter	pAT	Parameter	pAT	Parameter
1	Modulation	65		1		65	
2	Lb2 Clock Switch	66	Sostenuto	2		66	
3	PB Range	67	Soft Pedal	3		67	
4	Mix Gain	68		4		68	
5		69	Lb1 Phase	5		69	
6	Common Osc Coarse	70	Lb1 Fade In	6		70	
7	Plugiator Device Volume	71	Vd2 Resonance	7		71	Chorus Rate
8	Common Osc Fine	72	Vd2 Keyfollow	8		72	Chorus Phase
9	Common Osc PM Source	73	Vd2 Env Depth	9		73	Chorus Depth
10	Delay Dry/Wet	74	Vd2 Cutoff	10		74	Chorus Feedback
11	Preset Volume	75	Pan1	11		75	Chorus/Flinger
12	Amp Env Lvl	76	Pan1 Mod Source	12		76	
13	Amp Env Attack	77	Pan1 Mod Depth	13		77	
14	Amp Env Decay	78	Pan2	14		78	
15	Amp Env Sustain	79	Pan2 Mod Source	15		79	
16	Amp Env Release	80	Pan2 Mod Depth	16		80	
17	Vd Env Attack	81	Osc1 Grunge	17		81	Delay Time Left
18	Vd Env Decay	82	Vd Env TKF	18		82	Delay Note Left
19	Vd Env Sustain	83	Vd Env Tvel	19		83	
20	Vd Env Release	84	Vd Env Lvl	20		84	Delay Damp Left
21	Osc1 PM Depth	85	Amp Env TKF	21		85	Delay Level Left
22	Osc2 Waveform	86	Amp Env TVEL	22		86	Time / BPM Switch Left
23	Osc2 Coarse	87	Amp Env LEVEL	23		87	
24	Osc2 Fine	88	Lb1 Waveform	24		88	
25	Osc2 Grunge	89	Lb1 Rate	25		89	
26	Osc2 PM Source	90	Lb1 Retrigger	26		90	Delay Cross
27	Osc2 PM Depth	91	Chorus Dry/Wet	27		91	Delay Time Right
28	Osc1 Level	92	Lb1 Delay	28		92	Right Delay Note
29	Osc1 Level Mod Source	93	Synth/ Mic Volume	29		93	
30	Osc1 Level Mod Depth	94	Lb1 Fade Out	30		94	Delay Damp Right
31	Osc1 Balance	95	Lb1 Rate KF	31		95	Delay Level Right
32		96	Lb1 Rate Mod Source1	32		96	Time / BPM SwitchRight
33	Osc1 Balance Mod Source	97	Lb1 Rate Mod Depth1	33		97	BPM
34	Osc1 Balance Mod Depth	98	Lb1 Rate Mod Source2	34		98	Effects Bypass
35	Osc2 Level	99	Lb1 Rate Mod Depth2	35		99	
36	Osc2 Level Mod Source	100	Lb1 Level Mod Source	36		100	
37	Osc2 Level Mod Depth	101	Lb1 Level Mod Depth	37		101	
38	Osc2 Balance	102	Lb1 Clock Switch	38		102	
39	Osc2 Balance Mod Source	103	Lb1 Note Length	39		103	
40	Osc2 Balance Mod Depth	104	Lb2 Waveform	40		104	
41	Vd Mode	105	Lb2 Rate	41		105	Boost
42	Common Osc PM Depth	106	Lb2 Retrigger	42		106	
43	CF Mod Source	107	Lb2 Phase	43		107	
44	CF Mod Depth	108	Lb2 Delay	44		108	
45	Res Mod Source	109	Lb2 Fade In	45		109	
46	Res Mod Depth	110	Lb2 Fade Out	46		110	
47	Vd1 Type	111	Lb2 Rate KF	47		111	
48	Osc1 Waveform	112	Lb2 Rate Mod Source1	48		112	
49	Osc1 PM Source	113	Lb2 Rate Mod Depth1	49		113	
50		114	Lb2 Rate Mod Source2	50		114	
51	Osc1 Coarse	115	Lb2 Rate Mod Depth2	51		115	
52	Vd1 CF Mod Source	116	Lb2 Level Mod Source	52		116	
53	Vd1 CF Mod Depth	117	Lb2 Level Mod Depth	53		117	
54	Vd1 Res Mod Source	118	Lb2 Note Length	54		118	
55	Vd1 Res Mod Depth	119	Delay Feedback	55		119	
56	Vd2 Type	120	All Notes Off	56		120	
57	Vd1 Cutoff	121		57		121	
58	Vd1 Resonance	122	Local Control Off	58		122	
59	Vd1 Keyfollow	123		59		123	
60	Vd1 Env Depth	124		60		124	
61	Vd2 CF Mod Source	125		61		125	
62	Vd2 CF Mod Depth	126		62		126	
63	Vd2 Res Mod Source	127		63		127	
64	Sustain Pedal			64			

## Vocoderizer MIDI Implementation Table

### MIDI Controller Changes / Polyphonic Aftertouch Messages

CC	Parameter	CC	Parameter	pAT	Parameter	pAT	Parameter
1	Modulation	65	Unvoiced source select	1		65	
2	BPf2 Pan	66	Sostenuto	2		66	Vd Env Attack
3	BPf2Gain	67	Soft Pedal	3		67	
4	Solo	68	LoCutFreq	4		68	Vd Env Decay
5	Level (UV Source)	69	LPF Gain	5		69	
6	BPf3Gain	70	BPf1Gain	6		70	
7	Plugiator Device Volume	71	Release	7		71	Chorus Rate
8	BPf4Gain	72	Lb1 Rate	8		72	Chorus Phase
9	BPf5Gain	73	Analyse filter width	9		73	Depth
10	Delay Dry/Wet	74	Attack	10		74	Chorus Feedback
11	Preset Volume	75	BPf6Gain	11		75	Chorus/Flanger
12		76	BPf7Gain	12		76	
13	InGain (Analyse)	77	BPf8Gain	13		77	
14	InGain (Synth)	78	BPf9Gain	14		78	
15	Time	79	BPf10Gain	15		79	
16	Threshold	80	BPf11Gain	16	Ox1 Waveform	80	
17	LPF Gain	81	BPf12Gain	17	Ox1 Coarse	81	Delay Time Left
18	HPF Gain	82	BPf13Gain	18	Ox1 Fine	82	Delay Note Left
19	HPF Gain	83	BPf14Gain	19	Ox1 Grunge	83	
20		84	BPf15Gain	20		84	Delay Damp Left
21	BPf6Freq	85	BPf16Gain	21		85	Delay Level Left
22	BPf7Freq	86	BPf17Gain	22	Ox2 Waveform	86	Delay Time / BPM Left
23	BPf8Freq	87	BPf18Gain	23	Ox2 Coarse	87	
24	BPf9Freq	88	BPf19Gain	24	Ox2 Fine	88	
25	BPf10Freq	89	BPf20Gain	25	Ox2 Grunge	89	
26	BPf11Freq	90	HPF Gain	26		90	Delay Cross
27	BPf12Freq	91	Chorus Dry/Wet	27		91	Delay Time Right
28	BPf13Freq	92	BPf1 Pan	28	Ox1 Level	92	Delay Note Right
29	BPf14Freq	93	Synth / Mic Volume	29	Ox1 Level Mod Source	93	
30	BPf15Freq	94	BPf3 Pan	30	Ox1 Level Mod Depth	94	Delay Damp Right
31	BPf16Freq	95	BPf4 Pan	31		95	Delay Level Right
32		96	BPf5 Pan	32		96	Delay Time / BPM Right
33	BPf17Freq	97	BPf6 Pan	33		97	BPM
34	BPf18Freq	98	BPf7 Pan	34		98	Effects Bypass
35	BPf19Freq	99	BPf8 Pan	35	Ox2 Level	99	
36	BPf20Freq	100	BPf9 Pan	36	Ox2 Level Mod Source	100	Vd Env Sustain
37	HPF Freq	101	BPf10 Pan	37	Ox2 Level Mod Depth	101	Vd Env Release
38	LPF (Matrix)	102	BPf11 Pan	38		102	Vd Env TKF
39	BPf1 (Matrix)	103	BPf12 Pan	39		103	Vd Env TKF
40	BPf2 (Matrix)	104	BPf13 Pan	40		104	Vd Env Lvl
41	BPf3 (Matrix)	105	BPf14 Pan	41		105	Boost
42	BPf4 (Matrix)	106	BPf15 Pan	42		106	
43	BPf5 (Matrix)	107	BPf16 Pan	43		107	
44	BPf6 (Matrix)	108	BPf17 Pan	44		108	LF02 Phase
45	BPf7 (Matrix)	109	BPf18 Pan	45		109	Lb2 Waveform
46	BPf8 (Matrix)	110	BPf19 Pan	46		110	Lb2 Rate
47	BPf9 (Matrix)	111	BPf20 Pan	47	Vd2 Type	111	Amp Env Attack
48	BPf10 (Matrix)	112	HPF Pan	48	Vd2 Cutoff	112	Amp Env Decay
49	BPf11 (Matrix)	113	LPF Pan	49	Vd2 Resonance	113	Amp Env Sustain
50	BPf12 (Matrix)	114	HPF Freq	50	Vd2 Keyfollow	114	Amp Env Release
51	BPf13 (Matrix)	115	BPf1 Freq	51	Vd2 Env Depth	51	Amp Env TKF
52	BPf14 (Matrix)	116	BPf2 Freq	52	Vd2 CF Mod Source	116	Amp Env Tvl
53	BPf15 (Matrix)	117	BPf3 Freq	53	Vd2 CF Mod Depth	117	Amp Env Lvl
54	BPf16 (Matrix)	118	BPf4 Freq	54	Vd2 Res Mod Source	118	Lb1 Waveform
55	BPf17 (Matrix)	119	Delay Feedback	55	Vd2 Res Mod Depth	119	
56	BPf18 (Matrix)	120	All Notes Off	56		120	
57	BPf19 (Matrix)	121		57		121	LF01 Phase
58	BPf20 (Matrix)	122		58		122	
59	HPF (Matrix)	123		59		123	
60	Type (VU-Detect)	124		60		124	
61		125		61		125	
62	Hyth	126		62		126	
63	BPf5 Freq	127		63		127	
64	Sustain Pedal			64			

# Hardware Warranty Regulations

Use Audio Inc. warrants that the product is in material conformance with the requirements for reasonable enjoyment and operation of a sound synthesizer. However, Use Audio does not warrant the fitness of the product for any specific application and the warranted functionality is limited to features described in this edition of the User Manual. Although the product has been extensively tested with a wide range of computer music products, Use Audio Inc. can not warrant that the product is fully compatible and operational with every third party MIDI device, computer MIDI interface or computer or software configuration.

The limited hardware warranty for this product expressed herein ends after 24 months from the time the product was first sold in an unused condition by an authorized dealer.

If the product is found defective due to material defects within the first six months after purchase, and such defects are not due to non-compliance with operation instructions, Use Audio Inc. shall at its sole discretion and evaluation replace or repair the defective parts or product. Multiple repairs shall be permissible.

Within the time frame of 6 to 24 months after purchase, the customer has to provide proof, that the claimed malfunction or defective part or component is due to an issue which already has been present at the time of purchase. If reasonable proof has been provided in such case, Use Audio Inc. will execute required repair or replacement at no cost to the customer.

Any deficiencies caused by transportation have to be declared within a 14 days period after receipt of goods by written notice to your authorized dealer.

All warranty claims have to be made via your local dealer or distributor and have to contain proof of purchase (supply copy of original invoice) and a detailed description of the issue. Dealers and Distributors are required to comply with the RMA procedure which can be obtained from Use Audio Inc. upon request.

Alterations or modifications to the product which are not explicitly authorized in writing by Use Audio Inc. will immediately render any warranties null and void. Gross non-compliance with the operation and safety instructions may also impede your rights to warranty.

## **EMI / EMC Compliance**

This product is herewith certified to conform to the requirements set forth in the guidelines for electromagnetic acceptability (89/336/EWG) and Class B devices in part 15 of the applicable FCC regulations.

Use Audio Inc  
3705 BOA Tower Suite 289  
12 Harcourt Road  
Central, Hong Kong  
Tel: +852 3589 3075  
Fax: +852 2115 9818  
Email: [info@use-audio.com](mailto:info@use-audio.com)

## **Origin**

This product was manufactured in China and was designed in Germany and India with further contributions from UK, France, Italy, Israel and the USA.

On a side note, we are very proud of our truly global team - people across Christian, Islamic, Hindu, Sikh, Jewish and Buddhist backgrounds have been working together on the Plugiator product as friends. We thank everyone involved for their help to make this product become reality!

# Notes

You may want to take note of your Hardware Serial Number as well as further individual Activation Keys here, for later reference:

## My Hardware Serial Number

---

## My Activation Keys:

Minimax	THHA8X2F6RF5
B4000	R5H25X7G8DC6
LightWave	T3XHHHFCD92K
Vocodizer	_____
Prodyssesy	_____
Pro-12	_____
Fmagia	_____
Drums'n'Bass	_____

---



---



---



---

# Notes

# Notes